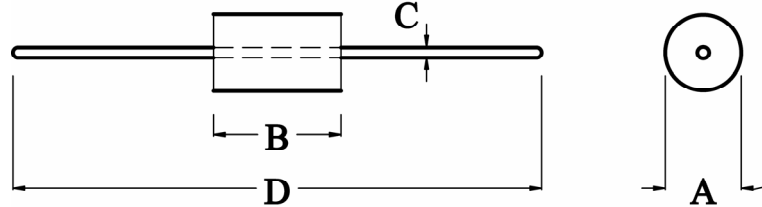


## FEATURES &

- ◆ Decreased DCR resistance
- ◆ Increased current capacity
- ◆ 25% impedance tolerance

## DIMENSIONS (mm)

Size (mm)	
C	D
$0.6 \pm 0.05$	$60.5 \pm 1.00$



## SERIES LIST

No.	Material	Part No.	Impedance ( $\Omega$ )		Size (mm)	
			Min. 25MHz	Min. 100MHz	A	B
1	K5A	RH 2.5×3.0×0.8	15	30	$2.5 \pm 0.15$	$3.0 \pm 0.30$
2	K5A	RH 3.5×3.0×0.8	30	50	$3.5 \pm 0.15$	$3.0 \pm 0.30$
3	K5A	RH 3.5×4.5×0.8	30	60	$3.5 \pm 0.15$	$4.5 \pm 0.30$
4	K5A	RH 3.5×4.7×0.8	35	60	$3.5 \pm 0.15$	$4.7 \pm 0.30$
5	NP22D	RH 3.5×4.7×0.8	50	60	$3.5 \pm 0.15$	$4.7 \pm 0.30$
6	K5A	RH 3.5×5.0×0.8	40	70	$3.5 \pm 0.15$	$5.0 \pm 0.30$
7	K5A	RH 3.5×6.0×0.8	50	75	$3.5 \pm 0.15$	$6.0 \pm 0.30$
8	C8	RH 3.5×6.0×0.8	40	90	$3.5 \pm 0.15$	$6.0 \pm 0.30$
9	NP22D	RH 3.5×6.0×0.8	60	75	$3.5 \pm 0.15$	$6.0 \pm 0.30$
10	K5A	RH 3.5×7.5×0.8	60	90	$3.5 \pm 0.15$	$7.5 \pm 0.30$
11	K5A	RH 3.5×8.0×0.8	60	100	$3.5 \pm 0.15$	$8.0 \pm 0.30$
12	C8	RH 3.5×8.0×0.8	60	130	$3.5 \pm 0.15$	$8.0 \pm 0.30$
13	K5A	RH 3.5×9.0×0.8	80	120	$3.5 \pm 0.15$	$9.0 \pm 0.30$
14	C8	RH 3.5×9.0×0.8	75	150	$3.5 \pm 0.15$	$9.0 \pm 0.30$
15	K5A	FDB 3.5×6.0×0.8	90	150	$3.5 \pm 0.15$	$6.0 \pm 0.30$
16	K5A	FDB 3.5×4.7×0.8	75	135	$3.5 \pm 0.15$	$4.7 \pm 0.30$

No.	Part No.	Size (mm)					
		A	B	C	D	H	P
1	FDB 3.5×6.0×0.8	$3.5 \pm 0.2$	$6.0 \pm 0.3$	$0.6 \pm 0.05$	$0.4 \pm 0.5$	7.5 Max	$5.0 \pm 0.5$
2	FDB 3.5×4.7×0.8	$3.5 \pm 0.2$	$4.7 \pm 0.3$	$0.6 \pm 0.05$	$0.4 \pm 0.5$	7.5 Max	$5.0 \pm 0.5$

## PACKAGE

RH Series	FDB Series
5,000 / Reel	1,000 / PE Bag
1,000 / Box	4,000 / Box

## FDB TYPE

